




True Issues[®]

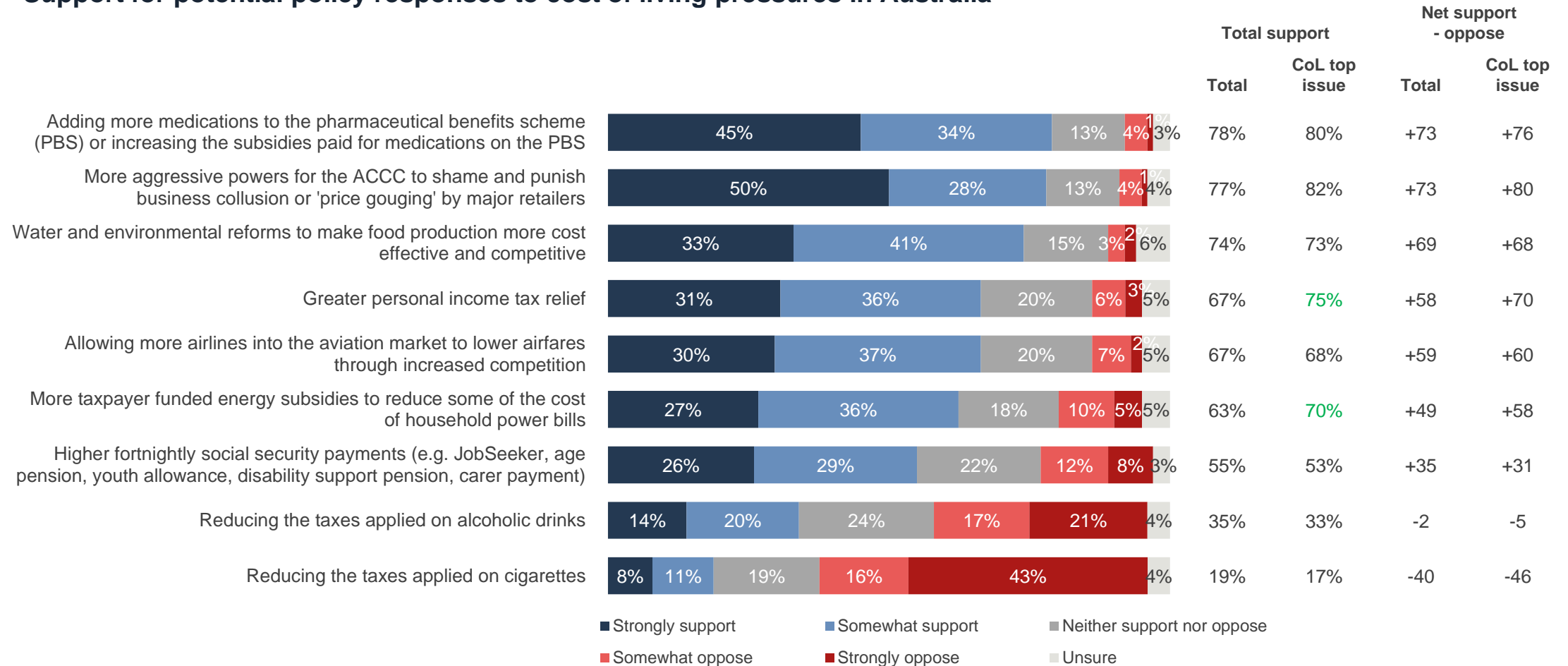
Special Release: Pre-election policy options

February 2025



Income taxes are popular but some other potential policy responses receive even greater levels of support

Support for potential policy responses to cost of living pressures in Australia



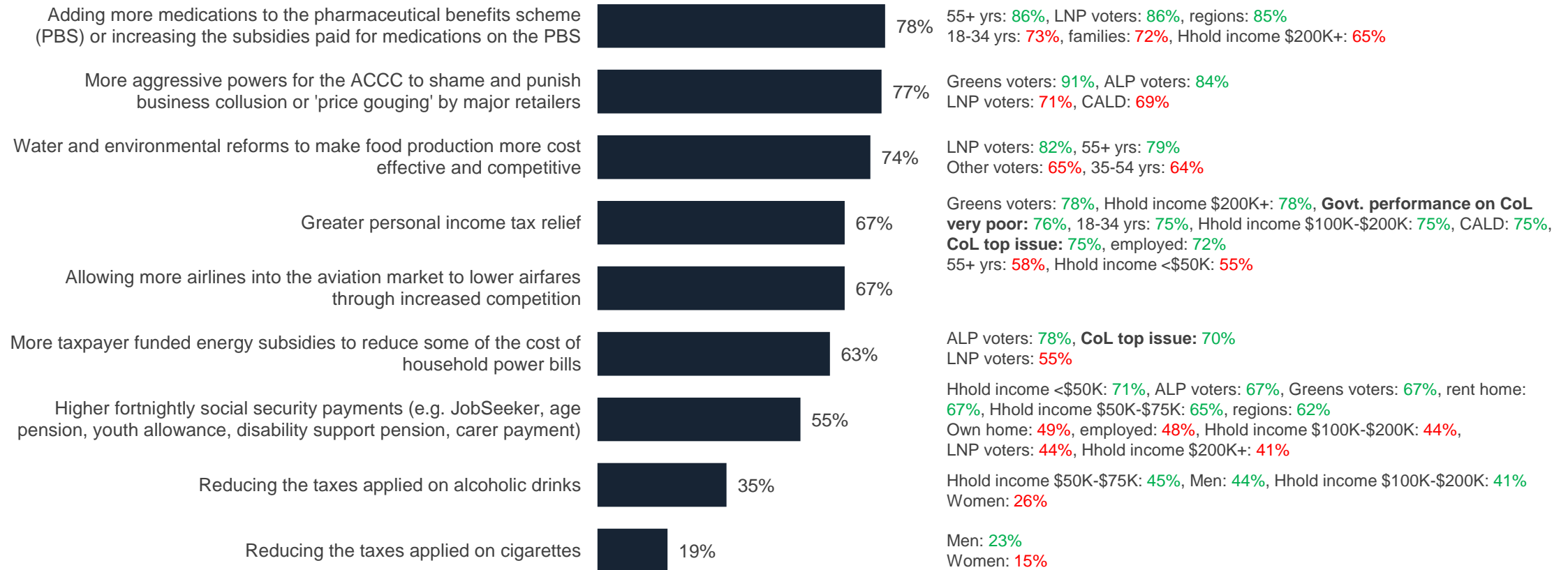
Significantly **higher** than the national total at the 95% confidence interval.
 Q. Do you support or oppose the following potential policy responses to cost of living pressures in Australia?
 Base: All respondents (n=1,000); Cost of living top issue unprompted and prompted (n=274).

Older and regionally based Australians especially keen on PBS listings, Greens voters want more powers for the ACCC

Support for potential policy responses to cost of living pressures in Australia

Total support (strongly + somewhat)

Significantly different among:



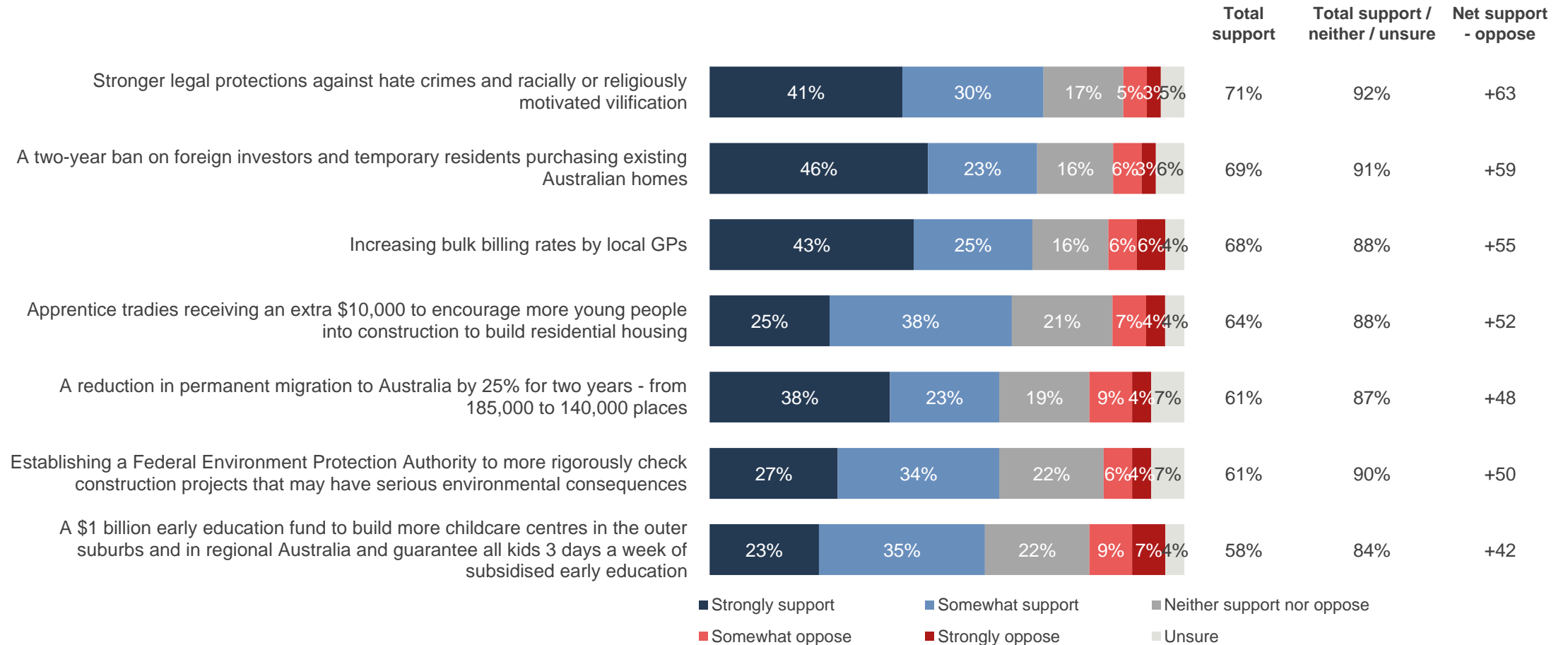
Significantly higher / lower than the national total at the 95% confidence interval.

Q. Do you support or oppose the following potential policy responses to cost of living pressures in Australia?

Base: All respondents (n=1,000).

Foreign investment restrictions strongly backed, with investing in bulk billing and apprentice tradies also popular

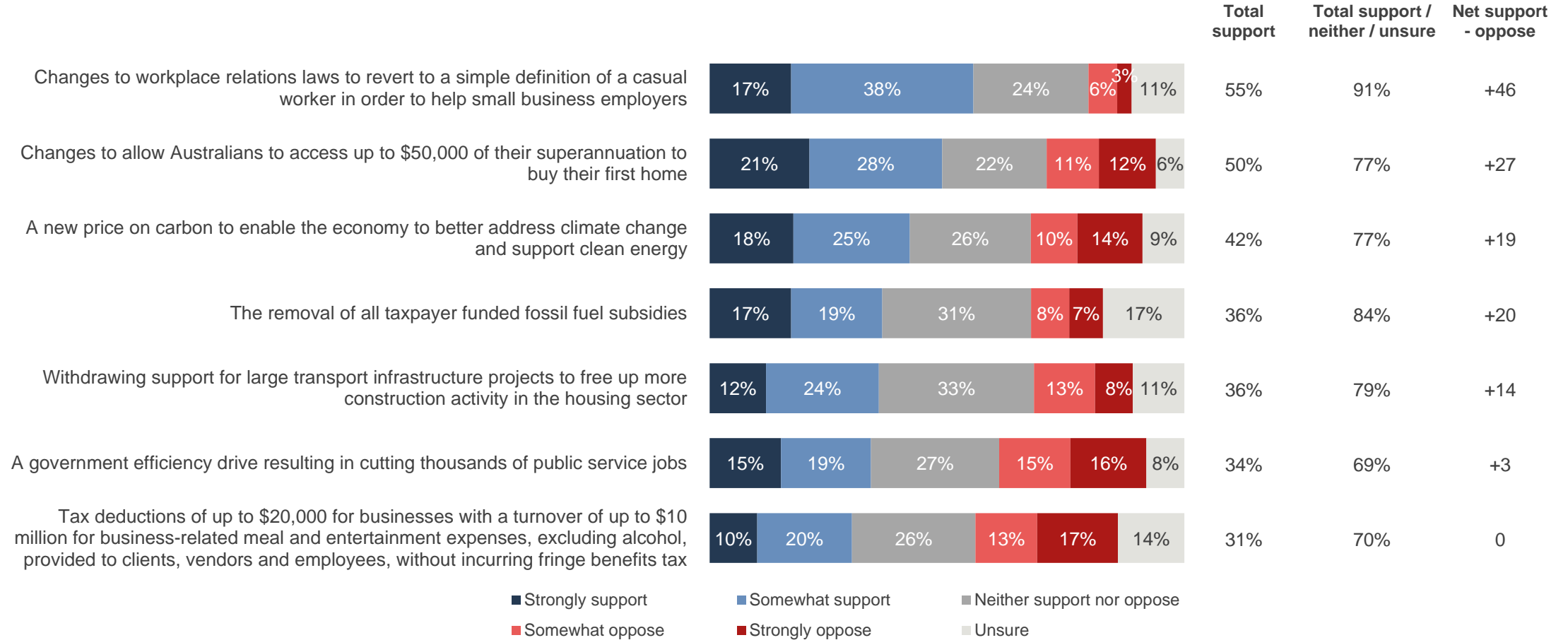
Support for policy ideas in an effort to strengthen our economy and society



Q. Do you support or oppose the following policy ideas in an effort to strengthen our economy and society?
 Base: All respondents (n=1,000).

Tax breaks for business lunches opposed as much as supported, and Government efficiency drive barely net positive

Support for policy ideas in an effort to strengthen our economy and society (cont'd)

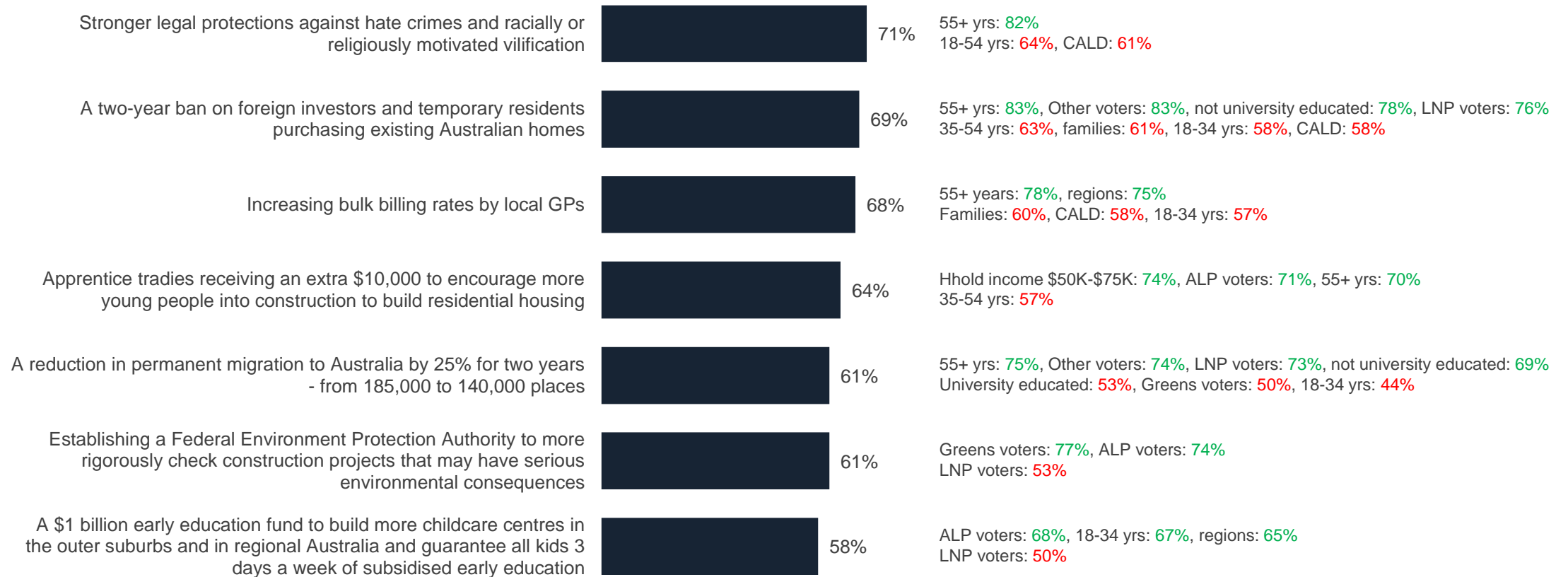


Q. Do you support or oppose the following policy ideas in an effort to strengthen our economy and society?
 Base: All respondents (n=1,000).

Large 18 point gap between Labor and LNP voters when considering more taxpayer spending on childcare

Support for policy ideas in an effort to strengthen our economy and society

Total support (strongly + somewhat)



Significantly higher / lower than the national total at the 95% confidence interval.

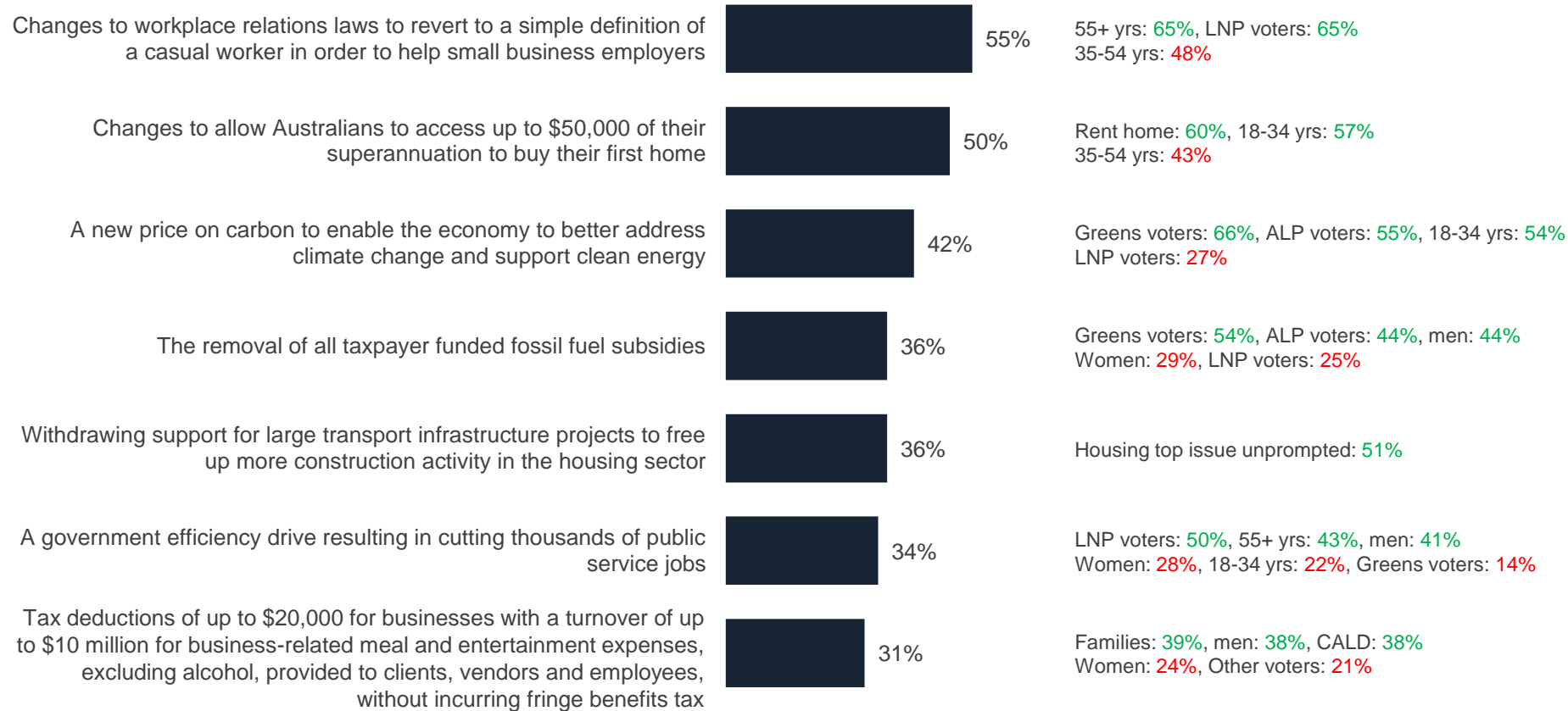
Q. Do you support or oppose the following policy ideas in an effort to strengthen our economy and society?

Base: All respondents (n=1,000).

Renters and younger adults back accessing super for home ownership, Greens and Labor voters want a price on carbon

Support for policy ideas in an effort to strengthen our economy and society (cont'd)

Total support (strongly + somewhat)



Significantly higher / lower than the national total at the 95% confidence interval.
 Q. Do you support or oppose the following policy ideas in an effort to strengthen our economy and society?
 Base: All respondents (n=1,000).

Survey methodology



NATIONAL ONLINE SURVEY

n=1,000 Australian adults


- Conducted Friday 31st January – Tuesday 4th February 2025.
- Sample quotas on age, gender and location with post-survey weighting to actual age / gender / location proportions from Census data.
- Maximum margin of error on n=1,000 is +/-3.1% at the 95% confidence level.
- Differences of +/-1% for net scores are due to rounding.

The research was conducted in compliance with AS-ISO 20252.



There are over 27 million people
in Australia...

Find out what they're thinking.

 **Contact us**
03 8685 8555

 **Follow us**
@JWSResearch

John Scales
Founder
jscales@jwsresearch.com

Mark Zuker
Managing Director
mzucker@jwsresearch.com

Katrina Cox
Director of Client Services
kcox@jwsresearch.com

Jessica Lai
Senior Research Director
jlai@jwsresearch.com

Tom Cameron
Business Development Manager
tcameron@jwsresearch.com

jwsresearch.com
+61 3 8685 8555